



Sustainability Report 2025



TABLE OF CONTENTS

Welcome.....2
Introduction.....3
Recognitions.....4

ORGANIC FAMILY FARMS

Sustaining Family Farms.....5
The Future of Dairy Farming.....7
A Climate Smart Organic Dairy Model.....8

OPERATIONS & BRAND

Sustainability at the Creamery.....9
Reducing Our Impact.....11
Creating a Sustainable Supply Chain12

PEOPLE & CULTURE

Our Straus Community.....13
Nourishing the Community.....15

ADVANCING SUSTAINABILITY

B Corp Rating.....19
Appendix.....21

Report Prepared By:
Kendra Bruno, Sustainability Specialist and
Joseph Button, VP of Sustainability & Strategic Impact

WELCOME MESSAGE

A Message from Mike Scheu, President



It is a privilege to introduce our 2025 sustainability report. At Straus Family Creamery, we are dedicated to providing a transparent look into how we operate, striving for stronger environmental outcomes, meaningful improvements across our supply chain, and the cultivation of an engaged and respected workforce. Sustainability is not only one of our company’s five core values—it is also an essential pillar of our management strategy.

Supporting family-run dairy farms within our communities lies at the heart of what we do. By producing high-quality, simply processed and great tasting organic dairy products, we aim to delight consumers while nurturing a thriving local food system. Our commitment to sustainability extends from the local farmers who supply our milk, to the cocoa harvesters whose work forms the foundation of our ice cream’s chocolate chips, to the 170 employees who drive our operations every day. Through our collective efforts, we aspire to foster both small and significant positive changes, building a sustainable and resilient future for all of our stakeholders and our communities.

A Message from Albert Straus, Founder & Executive Board Chair



Thirty-one years after founding the first organic creamery, our mission to sustain family farms and revitalize rural communities remains at the core of everything we do at Straus Family Creamery. We have long believed that organic dairy farming can be part of the solution to climate change, and that belief continues to guide our work today.

From the struggle of launching the new manufacturing plant to the global engagement at the World Dairy Summit, we are creating a local, sustainable food system that is essential to our shared future. We are not just envisioning a carbon-neutral farming model—we are putting it into practice through climate-smart innovation and regenerative farming. Our commitment is to make next-generation farming economically viable, champion the positive role of animal agriculture, and produce high-quality organic products that nourish people while safeguarding environmental health, global food security, and the future of independent family farms.



31 Years Later, Our Mission Continues Stronger Than Ever

When Straus Family Creamery became the first certified organic creamery in 1994, our founder Albert Straus saw organic farming as a way to sustain local family dairies—not a trend to profit from. More than three decades later, that mission remains central to our work: sustaining family farms in Marin and Sonoma Counties by producing high-quality, minimally processed organic dairy products and strengthening rural communities through advocacy and education.

We believe organic dairy farms are part of a climate smart food future. Today, with twelve local organic dairy farm suppliers, we are working toward our goal to have a carbon-neutral organic milk supply while ensuring local farming remains a viable livelihood for the next generation.

Over the last five years, the transition to a modern manufacturing facility has not always been easy, but our work continues with intention and purpose. With the largest investment in our history behind us, we are excited about the continued growth that can be achieved by partnering with new local organic dairy farms and advancing our sustainability initiatives in manufacturing.

This report highlights Straus Family Creamery’s 2025 sustainability achievements and celebrates our 31-year legacy of environmental leadership as we continue to advance a regenerative organic agricultural system that strengthens local communities.

OUR LOCAL ORGANIC MILK SHED

15 MILES AVERAGE FARM DISTANCE TO CREAMERY	25,201 AVG GALLONS OF MILK/DAY	331 COWS AVERAGE MILKING HERD SIZE
	9,206 ORGANIC ACRES	

12 FAMILY FARMS



Will Bucquoy Photography

TRESCH FAMILY Luther Burbank Conservation Award

The Tresch Family Dairies, the second certified organic dairy in California, were honored with the Luther Bank Conservation Award for their long-standing commitment to environmental stewardship and sustainable agriculture. For six generations—spanning more than 120 years—the Tresch family has cared for and regenerated their land through practices such as planting hundreds of native plants, rotational grazing, compost application, and riparian corridor restoration efforts, earning recognition from the Sonoma County Farm Bureau as leaders in regenerative farming.



Paige Green Photography

STRAUS DAIRY FARMERS Climate Action Champions Award

We were proud to have all of our network dairy farms receive the Climate Action Champions Award from the Agricultural Institute of Marin for their dedication and work in carbon sequestration, sustainable dairy farming, and implementation of regenerative agriculture practices.

Congratulations to Bordessa Dairies, Correia Dairy, Drakes View Dairy, Hughes Family Dairy, JJ Family Dairy, Mendoza Dairy, Moretti Family Dairy, Nosecchi Family Dairy, Robert McClelland Dairy, Silacci Dairy, Straus Dairy, and Tresch Family Farms.

ALBERT STRAUS Organic Lifetime Achievement Award



The Organic Trade Association honored Albert Straus with the prestigious Organic Lifetime Achievement Award, recognizing over 30 years of pioneering leadership in sustainable agriculture and organic dairy farming and processing.

Albert was celebrated for his visionary work in developing a replicable carbon-neutral dairy farming model. This award showcases Albert’s dedication to making next-generation farming viable while revitalizing rural communities by building an organic food system.

Sustaining Family Farms

The Future of Organic Dairy Farms

When Straus Family Creamery was founded in 1994, there were roughly 120,000 dairy farms across the United States.¹ Today, fewer than 24,000 remain.² These farms are vital to the fabric of communities – their loss impacts all sectors from schools, to grocery, to agriculture services. In 2025, our community lost six organic family dairy farms in the Point Reyes National Seashore, further exacerbating the challenge of maintaining our rural communities. These losses included two of our next generation supplying dairy farms, Drakes View Dairy and Mendoza Dairy, who chose to close their dairies due to a legal settlement in Point Reyes National Seashore.

In a region where we have witnessed the decline of small family owned and operated dairy farms, our commitment to their survival and growth continues stronger than ever. Despite the growing list of challenges for small, organic dairy farms, we continue to advocate on their behalf and for their protection and long term success.

The future of organic dairy farms will be successful by focusing on the principals of sustainable development: people, planet and profit. Without economic viability, our local dairy farms could not survive, which is why we prioritize offering a stable and premium pay price that reflects the true cost of high-quality organic production and environmental stewardship.

Straus Family Creamery's Dairy Business Model

Straus Family Creamery balances milk supply and demand to provide our farmers a more stable price, despite market volatility. Our business model prioritizes the financial viability of our partner dairy farms, respecting the vital role of local agriculture in our community.

In 2025, Straus Family Creamery paid partner farmers an average of \$38.43 per CWT, reflecting the high quality of the milk and organic production costs. Meanwhile the average cost of production for Straus network dairy farms was \$34.53 per CWT.

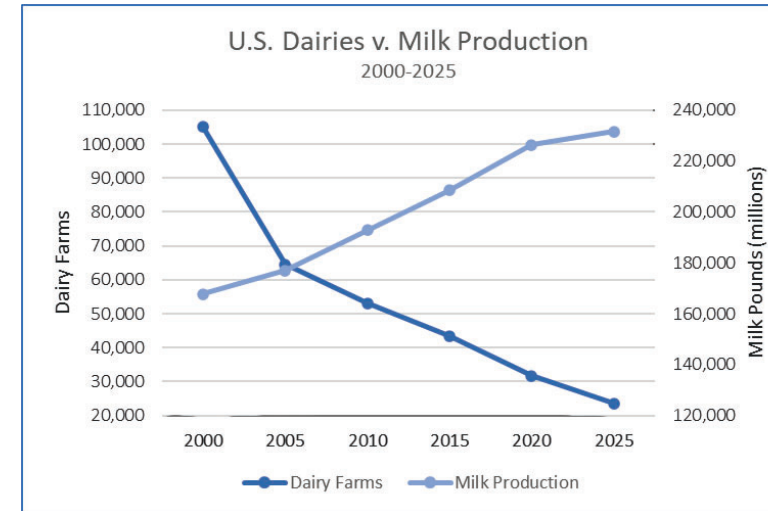


Figure A. The number of dairy farms in the United States has been in decline over the last 25 years, while milk production continues to increase. The vast majority of farm losses are small, family-owned farms.³

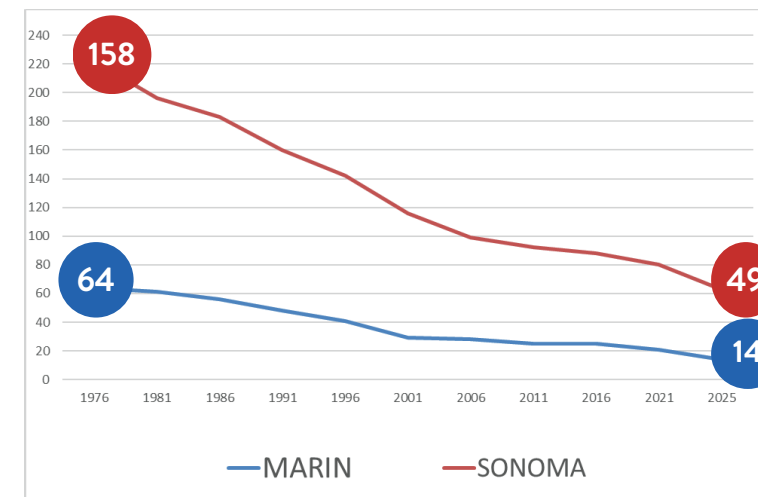


Figure B. The number of dairy farms in Sonoma and Marin Counties have significantly declined over the last forty years, decreasing by 69% and 78% respectively.⁴

The U.S. Dairy Economy

The U.S. milk market has been a rollercoaster of extremes for the dairy industry – high price volatility, huge increases in cost of production, and inflation and tariff impacts.

- According to USDA's Agriculture Marketing Service the average mailbox price for conventional milk in 2025 was \$20.41 cwt, representing a decrease of 6.25% from 2024. Meanwhile, economists believe the average cost of production for conventional dairy farms hovered at or above \$23 cwt creating continued negative economic pressure on all dairy farms, especially lower volume dairy producers.⁵
- Soaring beef prices have suppressed dairy herd size due to the increase sale of dairy cows to the beef market.
- The USDA approximates that over 1,000 dairy farms closed their doors in 2025, totaling 4% of all dairy farms in the USA.⁶

WELCOME BORDESSA FAMILY DAIRIES

Bordessa Family Dairy and Ocean Breeze Dairy

The Bordessa family brings a five-generation legacy of pasture-based dairy farming to Straus Family Creamery's network. Located near Valley Ford in Sonoma County, the Bordessa family's roots trace back to Switzerland and Italy, where their ancestors herded cows through the Alps, milking them by hand. Today, Gary and Sandy Bordessa, alongside their sons, Gino and Jarrid, and their families, carry on that rich dairy farming tradition.



The Future of Dairy Farming

As climate change threatens the future of our food system, Straus Family Creamery is working to, mitigate climate impacts and protect the environment.

Organic farming practices are the basis of our sustainability efforts. These practices promote good land stewardship, animal welfare and help sustain family farms while strengthening local communities. Our work to sustain family farms, protect the environment and mitigate climate change grows with each additional farm that is part of our network.

Studies show that globally and in California, agriculture is a significant source of climate emissions, 15% and 8% respectively.⁷ As a subset, animal agriculture represents over half of agricultural emissions in California.⁸ Significant reduction of methane emissions is one of the primary solutions to climate change. At Straus Family Creamery, we are working with our network of organic dairies to reduce methane emissions through alternative manure management practices as well as feeding strategies to minimize enteric emissions. Emerging science shows that agriculture has the power to reverse global emissions trends by drawing down carbon from the atmosphere and storing it in the soil.⁹ Our network dairies are participating in carbon sequestration practices such as intensive rotational grazing, composting manure and applying it to pasture land, planting a diversity of native plants and restoring riparian sites.

INNOVATING FOR THE FUTURE: THE WINDFALL BIO PILOT



Straus Family Creamery and the Correia Family Dairy partnered with Windfall Bio in a pilot project to capture methane using natural microbes known as mems. Memes eat waste methane and turn it in to desirable things like organic fertilizer – a major environmental win.

For over a month, it processed raw biogas without issues and converted more than 85% of manure methane into fertilizer, a highly valuable output.

📷: Windfall Bio Project

CARBON FARMING IN PRACTICE: COMPOSTING ON FARMS



Straus Dairy Farm was awarded a grant that paid for a concrete composting pad to support a multi wind row composting system.



Correia Family Dairy uses a composter that turns biosolids into compost that is used as bedding resulting in the elimination of sand, financial savings, and healthier soils.



Moretti Dairy Farm is composting manure solids in static aerated wind rows as part of their Healthy Soils Grant Project.

Straus Creamery Family has a bold plan to radically reduce methane emissions.

Straus Family Creamery is working to make organic dairy climate positive. All our supply dairy farms are on the path to implement a net carbon neutral dairy model by 2030. This model is based on replicable and financially feasible climate smart practices. We recognize the need for collective action to reduce climate emissions and strengthen local organic farms and food systems. Only through collaboration with our network of organic dairies, can this be achieved.

How are we helping our network dairy farmers achieve these ambitious goals? We created an Organic Dairy Sustainability Incentive Program that ties incentives to on-farm climate action. In the first three years of this program, we have distributed an average of \$250,000 each year. We know that no two organic farms are the same and central to this program is the development of a tailored Carbon Farm Plan that provides a blue print of regenerative practices to implement over the course of 20+ years.

A CLIMATE-SMART ORGANIC DAIRY MODEL

Our plan to achieve dairy farm carbon neutrality by 2030 on all of our network farms using innovative and replicable on-farm solutions.



The Solution Begins with Organic Agriculture

Organic practices are the foundation of the Straus Family Creamery carbon-neutral farming model. Organic dairy farms are pasture-based, reducing emissions associated with feed production and manure management. Organic agriculture also provides many environmental co-benefits, such as enhanced water quality and ecological diversity. All of Straus network dairy farms are certified organic.

GOAL: To help our network farms improve manure based fertilizer application on their farms to reduce nitrous oxide emissions.



Regenerative Carbon Farming Practices

Carbon farming is a set of land management practices that build healthy soils and sequesters atmospheric carbon. As of the end of 2025, all of our 12 network local organic dairy farms have a Carbon Farm Plan and are working on implementing the identified projects. Some of these practices include intentional and intensive rotational grazing herd management, on farm composting and land application, and planting diverse crop, shrub, and tree species.

GOAL: To partner with our network dairy farms to develop and implement short range climate action plans based on their Carbon Farm Plans over the next three years.



Reducing Methane Emissions from Manure Lagoons

There are multiple options to reduce methane emissions from manure lagoons, including anaerobic digestion for energy production or fertilizer production, manure lagoon aeration, augmented on farm composting, and manure separation and strategic fertigation.

GOAL: To help each of our network dairies identify and fund one of these methane mitigating project opportunities by 2030.



Feed Supplements to Suppress Enteric Emissions

Enteric methane emissions (commonly known as cow burps) is the biggest source of climate emissions on dairy farms. These emissions are a natural part of the cows' digestive process, and pasture-fed cows tend to produce more enteric emissions than those on a majority grain diet. To solve this challenge, new supplements are being explored to reduce enteric methane emissions in cows.

GOAL: To support the development and FDA approval of organic feed supplements that can be used by our network dairy farms.



Renewable Energy and On Farm Electrification

Thanks to our local community choice energy partners, Straus network farms are able to source renewable and low carbon electricity.

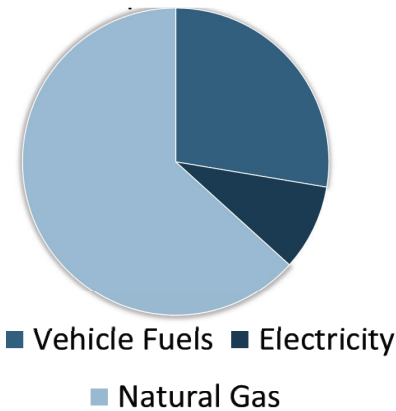
GOAL: To help convert diesel power farm equipment to electric equipment which will further reduce climate emissions.

Sustainability at the Creamery

2025 marks five years in our new manufacturing facility.

Straus Family Creamery has been reporting on environmental and social impacts for the past fifteen years. As a manufacturer of consumer-packaged food products we are committed to reducing the environmental impact of our operations. We are dedicated to reducing the resource intensity of climate, water, energy, and waste in our operations. Over the course of the 5 years at the new creamery, our milk production has increased by 28% while water consumption and energy consumption decreased by 3% and 16% per CWT (hundred pounds of milk), respectively. One of our company core values is sustainability and in addition to reducing intensity metrics, we also are seeking long-term solutions that will reduce our overall impacts, especially related to climate, water, and waste.

MEASURED
2025 SCOPE 1 & 2 EMISSIONS



A lot has changed since we opened the creamery in 1994, but our values are the same. Straus Family Creamery is working toward a Zero-Impact Facility.

OUR VISION FOR SUSTAINABLE MANUFACTURING:

ENERGY



Though our new Creamery is only five years old, we are looking for ways to implement energy efficiency measures. We are developing a 5-year energy roadmap with new Operation Leadership to maximize on-site renewables and efficiency, utilize low GHG impact refrigerants, and shift to heat pump technology whenever possible.

GOAL: To decarbonize our operations through innovative technological improvements.

WATER TREATMENT & REUSE



We recognize the importance of water re-use and maximizing fresh water efficiency. In 2026, we plan to install a waste water pre-treatment system, which will offer greater potential for water recycling.

GOAL: Maximize water re-use in manufacturing and advance onsite treatment of waste water.

MINIMIZE PRODUCT WASTE



Since moving into the new facility in 2021, we have experienced greater product loss than anticipated. As we continue to grow, we are focusing on reducing product waste lost in manufacturing through technology investments and preventative maintenance of equipment.

GOAL: To reduce our product waste through technological advances and preventative maintenance.

SUSTAINABLE INGREDIENTS



At Straus Family Creamery, every part of the supply chain matters – from the organic pastures to the organic chocolatey chips in our ice creams. Through our Sustainability Sourcing Framework, we vet our suppliers for their environmental, social, and economic impacts and partner with those who reflect the same core values.

GOAL: Develop partnerships with suppliers of ingredients to advance sustainability throughout our supply chain.

SUSTAINABLE PACKAGING



Since our founding, we have used glass milk bottles for our iconic cream topped milk. When we moved into the new plant, we invested in a new custom bottle washer to support greater volumes of reusable packaging. We are also continually looking for ways to improve all of our product packaging, including the elimination of the use of petroleum based packaging.

GOALS: Using 100% recyclable, reusable or compostable packaging in coordination with EPR laws. Improve our glass bottle return rate from 70% to 90%.

MATERIAL MANAGEMENT



In 2019, Straus Family Creamery became the first dairy producer in the world to achieve TRUE Zero Waste Certification. We have started working towards our re-certification, which means that 90% of our over 1 million pounds of managed solid waste is diverted from the landfill and instead is composted, recycled, or reused.

GOAL: To become TRUE Zero Waste Re-certified in 2027.

SUSTAINABILITY METRICS 2021-2025

2021	2025	5-Year Trend	
61.7 MILLION POUNDS of MILK PROCESSED	79.1 MILLION POUNDS of MILK PROCESSED	↑	28%
1,662 MT CO ₂ e TOTAL EMISSIONS	1,802 MT CO ₂ e TOTAL EMISSIONS	↑	1%
0.003 MT CO ₂ e EMISSIONS per CWT	0.002 MT CO ₂ e EMISSIONS per CWT	↓	-15%
5.9 KWH ELECTRICITY per CWT	5.0 KWH ELECTRICITY per CWT	↓	-16%
.310 THERMS NATURAL GAS per CWT	.272 THERMS NATURAL GAS per CWT	↓	-12%
.07 GALLONS DIESEL per CWT	.06 GALLONS DIESEL per CWT	↓	-9%
36 GALLONS WATER per CWT	35 GALLONS WATER per CWT	↓	-3%
N/A POUNDS LANDFILL per CWT	0.145 POUNDS LANDFILL per CWT		N/A%

Reducing Our Impact

In 2025, Straus Family Creamery re-activated dormant waste management programs from 2019.

Since 1994 we have been bottling our premium organic milk in reusable glass bottles and have been measuring our waste impacts since 2010. Glass bottle milk remains our most iconic product, thanks to the support of environmentally-conscious consumers who return their bottles for reuse. Over the last ten years, we have a 70% return rate for all of our bottles – including over 3.5 million bottles returned in 2025. We are always working to increase our return rate through increased messaging, design changes, and social media engagement, and are working to one day achieve a 90% return rate.

For the first time since 2020, the Sustainability Team completed multiple waste characterizations at each site that gave insight into our solid waste diversion practices and highlighted the successes and the areas for improvement. All three waste streams were audited (compost, recycling, and landfill). The Creamery’s audit lasted five days and included sorting through over 3,300 pounds of material! Between both sites, over one million pounds of materials are being diverted away from landfill. At our facilities, we recycle all cardboard, shrink wrap, glass, milk caps, pallets, chemical containers, and scrap metal in single streams. We also became one of the first businesses to use the new regional depackager, allowing us to compost packaged goods and fiber based materials lined with plastic that we previously had to landfill. Our desire to reuse and reduce is endless and this year we partnered with a handful of organizations and jurisdictions to divert over 1,000 buckets for re-use.



Our Path to Become TRUE® Zero Waste Re-Certified. Over the last year, we have reactivated some of our sustainability and solid waste best practices in waste management and diversion. Here are some of our key zero waste accomplishments from 2025.



REUSED 3.5 MILLION GLASS BOTTLES

Our customers returned more than 3.5 million glass milk bottles in 2025. The bottles are cleaned, sterilized, and filled with fresh, organic milk at our creamery.



DONATED 227,778 lbs of STRAUS PRODUCTS

We donate nourishing, and delicious, products to the Redwood Empire Food Bank to help feed our neighbors in need.



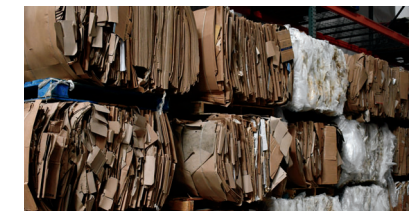
RECYCLED 303,450 lbs of WOOD PALLETS

All used pallets are recycled through the pallet companies we work with, allowing for reuse and recycling of the wood.



DIVERTED 1,000s of BUCKETS

By collaborating with local groups and businesses, we were able to donate usable buckets to give them a second life.



RECYCLED 228,336 lbs of CARDBOARD

In 2025, we recycled and diverted for re-use over a hundred tons of cardboard from both of our sites to responsible end markets.



AUDITED WASTE with 35 EMPLOYEE VOLUNTEERS

The Sustainability Team completed waste audits at both sites for the first time since 2020. The team spent 5 days going through materials at the Creamery and an afternoon at Petaluma admin office.



DIVERTED 418,600 lbs to ANIMAL FEED

We partner with a local pig farmer that picks up unsalable product and scrap that can be used for pig feed instead of composting it.



COMPOSTED 51,384 lbs of ORGANIC WASTE

With the new depackager program at the Republic Services landfill, we are now able to compost packaged goods and paper based materials lined with plastic.



RECYCLED 24,200 lbs of MILK CAPS

Many Straus customers return their glass bottles with the plastic caps. These caps are too small for single-stream recycling, so we recycle them separately.

Creating a Sustainable Supply Chain

From the 12 network organic dairies to the 27 organic certified ingredients in our premium quality products, Straus is committed to having a resilient and sustainable supply chain that supports communities, people, and the environment.

Creating a truly circular economy will take time, investment, and innovation. Straus Family Creamery is, and has been, up to the challenge.

SUSTAINABLE PACKAGING ROADMAP UPDATE

At Straus Family Creamery, advancing a more circular packaging economy is essential. That is why in 2020 we created a Sustainable Packaging Roadmap and Ethics Agreement. This allowed us to complete analyses for all of our packaging while providing general guidelines of possible opportunities for more sustainable packaging. Our goals over the course of the next few years will include updating our roadmap to include new options due to new packaging technology, new requirements from Extended Producer Responsibility laws, and updating the life cycle analyses on all of our current product packaging.

The packaging world is rapidly evolving and we are working to identify better alternatives for all of our packaging. We seek to identify packaging alternatives that protects the quality of our premium products and the health of our planet.



**Some ingredients, such as salt, are ineligible for organic*

STRAUS SUSTAINABLE SOURCING INGREDIENT FRAMEWORK



EXTENDED PRODUCER RESPONSIBILITY

New extended producer responsibility laws are being enacted across the nation, requiring producers of manufactured goods to re-evaluate their current product packaging, with an emphasis on reducing petroleum based materials while helping to create responsible end markets through the fees collected through EPR programs. Thanks to our Sustainable Packaging Roadmap, we already have the foundation and tools necessary to meet these and our own goals of 100% recyclable, compostable or reusable packaging.



LOCAL DAIRIES



ETHICALLY SOURCED INGREDIENTS



COMMUNITY-BASED CREAMERY



OUR KITCHEN TABLES






A RESILIENT, LOCAL FOOD SYSTEM

Our Straus Family Community

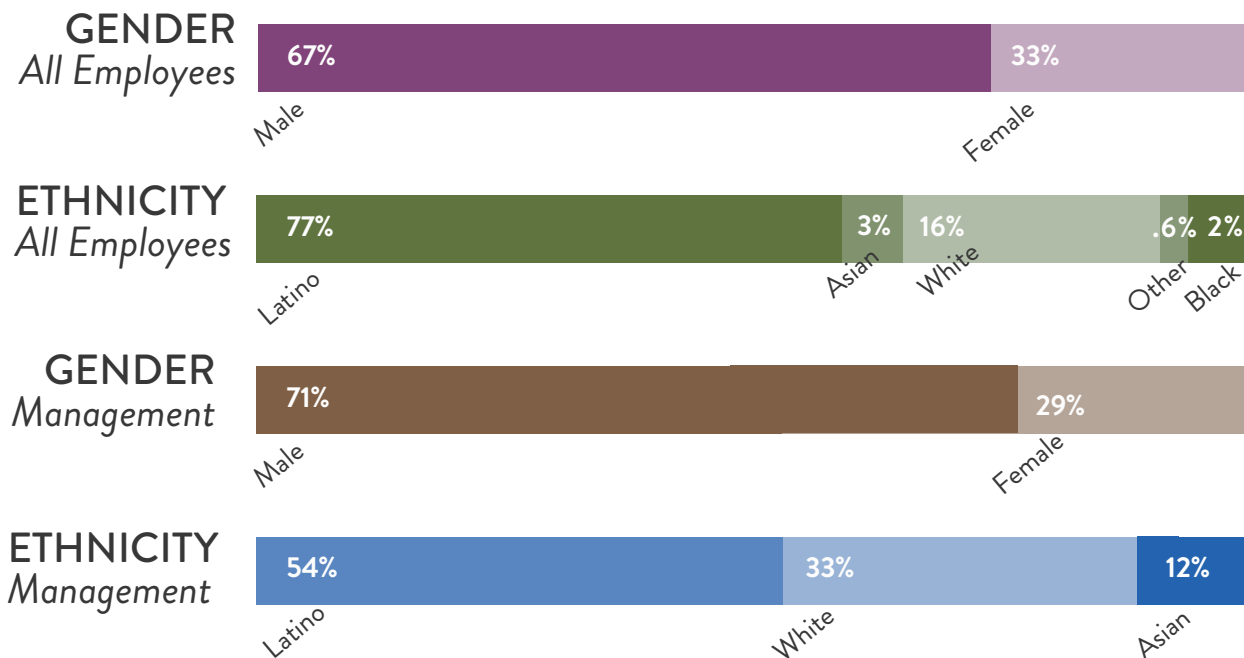
We prioritize the wellbeing of our workforce and their families.

At Straus Family Creamery, respect for our people is fundamental to our mission and long-term success. At start of 2025, all team members' wages meet or exceed Sonoma County's Living Wage. We are committed to fostering a workplace that is safe, equitable, and inclusive for all 170 employees. This commitment is led by our leadership team, who actively promotes a culture where employees feel valued, supported, and connected to the mission and values of our brand.

Our People & Culture Team serves as the steward of this commitment, designing and implementing programs that support employee wellbeing across physical health, financial security, and work-life balance.

<p>HEALTH & WELLNESS</p>  <ul style="list-style-type: none"> Fully sponsored healthcare and dental plan Subsidized gym membership Annual wellness fair with on-site flu shots Monthly birthday celebrations 	<p>FINANCIAL STABILITY</p>  <ul style="list-style-type: none"> 401k with employer match up to 5% Honey Bee financial advice and zero-interest loans All starting wages exceed local minimum wage 	<p>2025 SAFETY RECORD</p>  <ul style="list-style-type: none"> 38 recorded incidents 5 OSHA recordable incidents 2 modified duty assignments 4 days of work lost 1 incident per 10,279 hours worked
---	---	---

2025 WORKFORCE STATISTICS



Our culture and values are the fabric of our team. Together, We are Straus.

Our culture isn't something written on a wall — it's something we live every day. It's shaped by team members with roots across from the USA, Latin America, Europe, Asia, and Southwest Asia. These varied paths and perspectives come together in how we work, connect, and show up for one another. We believe our diversity of perspective and thoughts builds a stronger culture and team. We encourage our team to show up with respect, curiosity, and a shared commitment to our values and high-quality work.

We work alongside teammates at every stage of their careers from those just getting started fresh out of high school to others who bring decades of experience and stay because they believe in the work, the mission, and the people. That balance of fresh ideas and hard-earned wisdom keeps our culture strong, grounded, and built to last.

Together, we don't just contribute to the culture — we create it. Collectively, we create a workplace where people are proud to work, proud to belong, and proud to be part of something bigger.



CORE VALUES UPDATED

In 2024-2025, employees from across departments and organizational levels came together to collaboratively refresh Straus Family Creamery's Core Values. Over the course of six months, the values revitalization task force thoughtfully reviewed, refined, and redefined each value to ensure they authentically reflected the culture of Straus. The result is a set of Core Values that meaningfully guide our day-to-day decisions, behaviors, and ways of working across the organization.

SUSTAINABILITY	QUALITY	RESPECT
INTEGRITY		FORWARD THINKING

Nourishing the Community

Supporting and partnering with community organizations that reflect our core values.

Straus Family Creamery is proud to have offered organizations over a half million dollars in monetary and in kind support in 2025. We donated \$82,000 to mission aligned non-profits and contributed products worth \$440,000 to hunger relief and community events. We focus our donations and sponsorships on organizations that are aligned with the issues closest to our hearts. Listed below are the five categories where we focus our donations and sponsorships.

STRENGTHENING THE FABRIC OF OUR COMMUNITY



ENVIRONMENTAL



FOOD & CULINARY



COMMUNITY



ORGANIC INDUSTRY & POLICY



FARMING

STRAUS FAMILY CREAMERY AT FARMERS' MARKETS



Our team at Straus Family Creamery believes that Farmers' Markets are essential to every community's fabric. Farmers' Markets play a critical role in preserving local, sustainable family and small scale farming while also being a central place for community to come together and share positive energy for our local food network.

Wendy Booth, Farmers' Market Supervisor, has been representing Straus at the Bay Area Farmers' Markets for the last 16 years. She has helped and overseen amazing growth in product sales at our local Farmers' Markets – going from selling \$600/week to around \$8,500/week.

In 2025, Straus Family Creamery partnered with local nonprofit Redwood Food Bank and donated close to half a million dollars worth of food.



In partnership with the Redwood Food Bank, Straus Family Creamery helped get over 200,000 pounds of milk, yogurt, ice cream, sour cream, and butter into the hands of those who are facing food insecurity.

Redwood Food Bank serves over 135,000 children, families and seniors every year – our company is proud to be a partner in helping them reduce hunger in Northern California.

200,000 lbs donated!

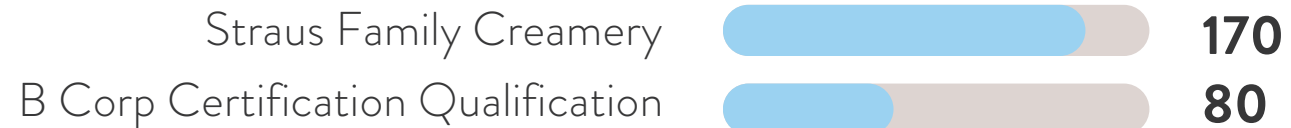
EMPLOYEE DONATION PROGRAM

At Straus Family Creamery, our staff is dedicated to supporting organizations that align with our core company values and community. Additionally, we prioritize the causes that are important to our employees. Through our newly established Employee Donation Program, we provide monetary or product donations to organizations and events that our team members are passionate about. These may include your church, children's sports teams, and local charitable organizations with which employees are involved.

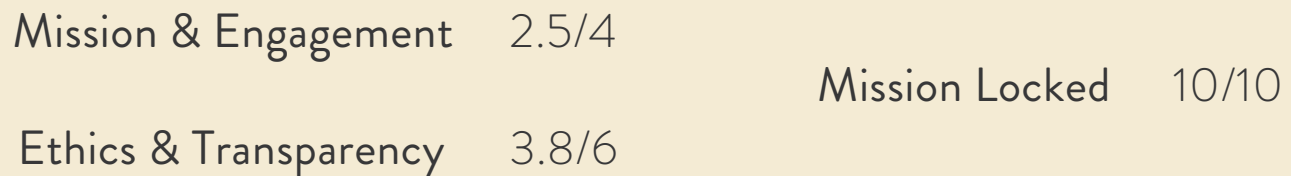


OVERALL B IMPACT SCORE

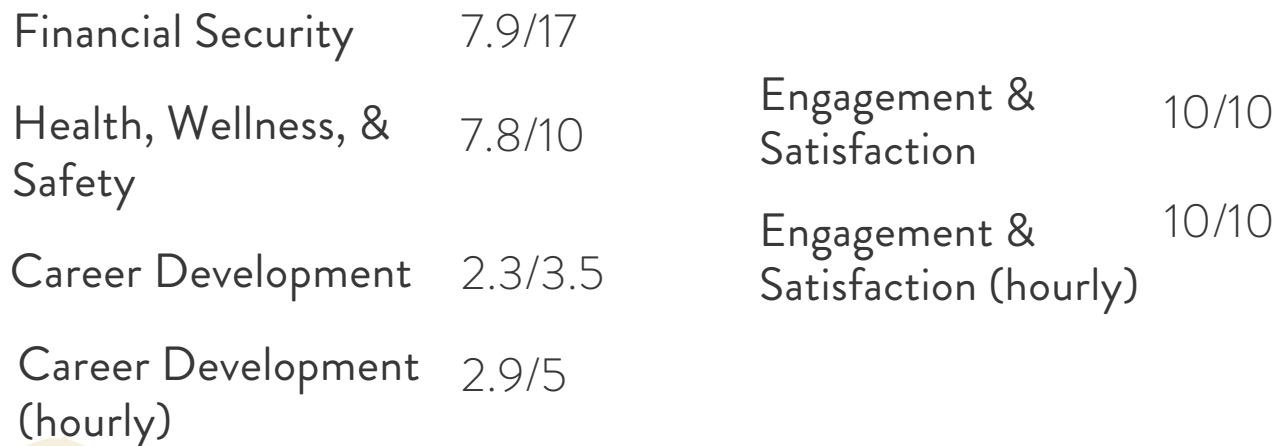
Straus Family Creamery is a California Benefit corporation, which means by California State Law we create a general public benefit. Additionally, though we are not B Corp Certified, we complete the B Lab Impact assessment and have received a score of 170.00, with a requirement of 80 points to become B Corp. Certified. An in depth standing of our company is below. Transparency for our sustainable progress and potential areas of improvement is important and that is why we share and include this detailed report.



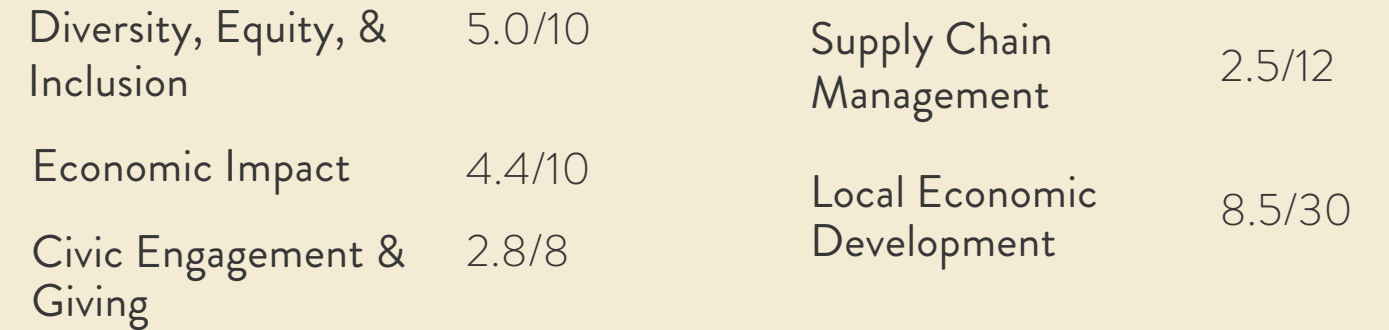
GOVERNANCE 16.3 / 20



WORKERS 23.6 / 40



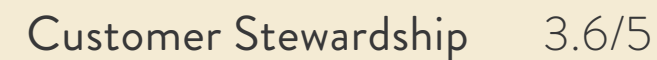
COMMUNITY 25.8 / 70



ENVIRONMENT 100.4 / 165



CUSTOMERS 3.6 / 5



Appendix

- National dairy farm statistics based on data from the U.S. Department of Agriculture (USDA). USDA publishes annual estimates of licensed dairy herds, defined as “average number of dairy farms licensed to sell milk, based on counts collected from the State and other regulatory agencies.” Source: USDA Milk Production Report Archive, <https://usda.library.cornell.edu/concern/publications/h989r321c?locale=en>
- National dairy farm statistics based on data from the U.S. Department of Agriculture (USDA): <https://www.ers.usda.gov/topics/animal-products/dairy>
- See Figure A
- See Figure B
- USDA Report on Mailbox Milk Price released in March 2026 and Economic Review of Milk Costs in 2024 and Projections for 2025 and 2026 by Zwilling, Bradley. https://mymarketnews.ams.usda.gov/filerepo/sites/default/files/3357/2025-12-01/1312423/ams_3357_00054.pdf
<https://farmdocdaily.illinois.edu/2025/12/economic-review-of-milk-costs-in-2024-and-projections-for-2025-and-2026.html#:~:text=Feed%20costs%20per%20100%20pounds,100%20pounds%20of%20milk%20produced.>
- National dairy farm statistics based on data from the U.S. Department of Agriculture (USDA). <https://www.ers.usda.gov/topics/animal-products/dairy/readings>
- California Climate Dashboard, Cal EPA Measurements of climate emissions by sector. and Food and Agriculture Organization of the United Nations, *Greenhouse gas emissions from agrifood systems. 2000-2022* <https://calepa.ca.gov/climate-dashboard/#Agriculture>
<https://openknowledge.fao.org/server/api/core/bitstreams/111b7ee8-282b-42ff-ad95-cccecd90f8ea/content>
- Food and Agriculture Organization of the United Nations, *Greenhouse gas emissions from agrifood systems. 2000-2022* <https://openknowledge.fao.org/server/api/core/bitstreams/111b7ee8-282b-42ff-ad95-cccecd90f8ea/content>
- Soil Based Carbon Sequestration study by MIT. <https://climate.mit.edu/explainers/soil-based-carbon-sequestration>

Figure A: U.S. Dairy Farms

Year	Milk Production (million lbs)	Number of Dairies
2000	167,700.00	105,250.00
2005	177,000.00	64,555.00
2010	192,848.00	53,127.00
2015	208,597.00	43,534.00
2020	226,293.00	31,657.00
2025	231,658.00	23,609.00

Progressive Dairy, issue: 2025 US dairy Statistics

Figure B: Sonoma and Marin Dairies

	MARIN	SONOMA
1976	64	158
1981	61	135
1986	56	127
1991	48	112
1996	41	101
2001	29	87
2006	28	71
2011	25	67
2016	25	63
2021	21	59
2025	14	49

Market Milk and Manufacturing Dairies Data, Local

Appendix

Figure C: Straus Family Creamery Supplier Farms

Organic Family Farm	Organic Family Farm	Organic Acentage	Organic Milking Cow Herd	Partnership Years	Year Joined SFC
Straus	Straus Dairy Farm	486	280	31	1994
Tresch	Tresch Family Deer Valley Dairy West	1400	550	29	1996
Tresch	Deer Valley Dairy East	700	315	22	2003
Hughes	Westview Dairy Farm	182	210	20	2005
Correia	Correia Family Dairy	450	400	15	2010
Silacci	Silacci Dairy Farm	486	220	12	2013
Spaletta	JJ's Family Dairy	737	400	6	2019
Moretti	Moretti Family Dairy	400	270	2	2023
McClelland	Robert McClelland Dairy	1220	330	1	2023
Nosecchi	Nosecchi Family Dairy	545	200	1	2024
Bordessa	Bordessa Dairy Farm	1300	400	< 1	2025
Bordessa	Ocean Breeze Dairy	1300	400	< 1	2025
<i>Closed in 2025</i>					
Nunes	Drakes View Dairy	866	320	6	2019
Mendoza	Double M Ranch	1200	200	13	2014

Figure D: Sustainability Metrics In Operations

KEY METRICS	2021	2025	% change
Pounds of Milk Processed	61,718,907	79,108,034	28%
CWT of Milk Processed	617,189	791,081	28%
Water Gallons Used	22,069,507	27,321,507	24%
Diesel Gallons Purchased	41,785	48,687	17%
Electricity kWh Used (SFC)	3,660,493	3,953,899	8%
Natural Gas Therms (SFC)	191,170	215,206	13%



Nourishing Farms, Food, People, and Earth.
strausfamilycreamery.com

